


vola®

VOLA Round Series.
Discreetly efficient. Visibly VOLA.





Our waste bin and paper tissue dispenser may be new, but they follow a longstanding principle. Demonstrating how we relish change while respecting continuity, they're based on the classic VOLA design. As always, in keeping with our design principles, the technical parts are hidden from view.

The first products in the new VOLA Round Series, the bathroom waste bin and paper tissue dispenser, are designed for the bathrooms of prestigious houses and luxury apartments and can be specified for washrooms in hotels, restaurants, office buildings and cultural destinations such as galleries, museums and theatres.

Together, the new additions to our range show that new ideas combined with lasting values can create a balance between revolution and evolution. More practically, they confirm that bathrooms and washrooms can now be totally VOLA.

No compromise. Nothing but VOLA.

Built-in/flush paper tissue dispenser and waste bin finished in white with chrome ring surround.



Pure, 100% VOLA.

The design of the Round Series is centred on the circle, a key feature of the VOLA design. Never ending, the circle points in all directions, creating a visually strong element in the room.

Based on the classic VOLA design, the new products translate the circle into new dimensions, with a ring enclosing a cylinder. This ring is finished in high-polished chrome or brushed stainless steel combined with white or black fronts. For larger projects, the fronts can be supplied in any colour and the fronts can be changed to an alternative colour in later renovations.

The end result is a series of products creating a reference point to the VOLA taps and accessories in the room.

True to tradition, the VOLA Round Series waste bin is unobtrusive, with the less aesthetically pleasing elements built into the wall. It can be opened by gently pushing the front with a hand or knee. The open/close mechanism is smooth and silent. The built-in waste bin, VOLA RS1, holds up to 30 paper tissues.

The bin is easy to empty and with no floor contact, need not be moved for cleaning.





Alternative mounting of built-in waste bin into pillars on either side of the wash basins.



Far left:
The waste bin can be mounted near floor level for use as a sanitary towel bin.

Left:
Alternative mounting of built-in waste bin into each side of the wooden decktop.



The retrofit version of the VOLA waste bin is as elegant as the built-in bin. Creating the same harmonious interior design, it fulfils its function in a discreet, stylish way. This small retrofit waste bin, VOLA RS3, holds up to 90 paper tissues.

Retrofit waste bin finished in white with brushed steel ring surround.





Based on the classic VOLA design, the paper tissue dispenser, RS2, has a stainless steel rim enclosing a cylinder built into the wall. The cylinder, holding up to 100 paper tissues, is white plastic with a silky-soft, smooth surface. A concealed spring makes sure the tissues are always pushed to the front.

The products of the new VOLA Round Series are suitable for locations where total cohesion between architecture and design must be achieved. These important places include washrooms in hotels, restaurants, office buildings and cultural destinations such as galleries, museums and theatres.

Built-in/flush paper tissue dispenser finished in white with chrome ring surround and retrofit waste bin finished in white with chrome ring surround.



The VOLA Round Series for the corporate washroom

The large retrofit waste bin, VOLA RS4, holds up to 250 paper tissues.

Built-in/flush paper tissue dispenser finished in black with brushed steel ring surround and large retrofit waste bin finished in black with brushed steel ring surround.



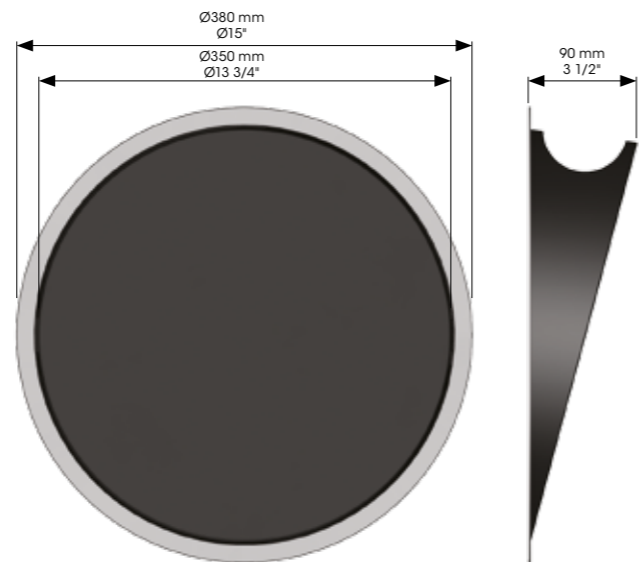
Washroom staff can easily see if the dispenser needs refilling and new paper tissues can be simply inserted by pulling the cylinder forward.

Built-in/flush paper tissue dispenser finished in black with brushed steel ring surround and large retrofit waste bin finished in black with brushed steel ring surround.

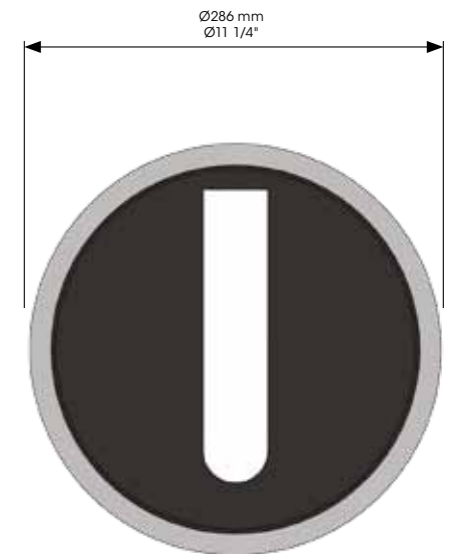
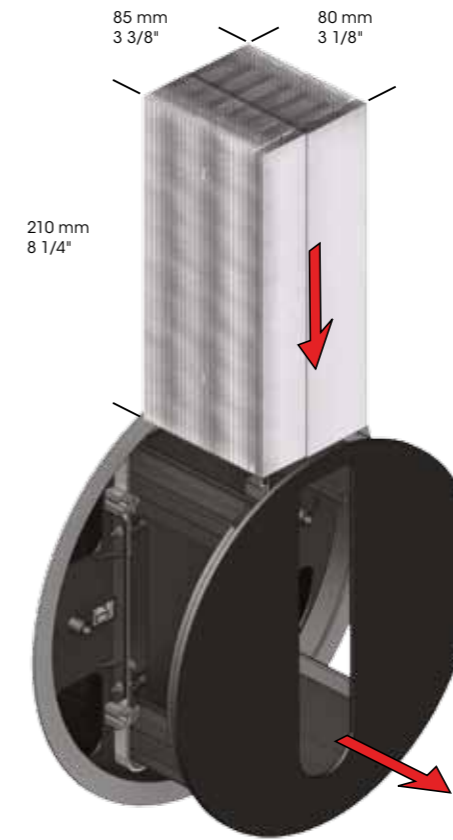
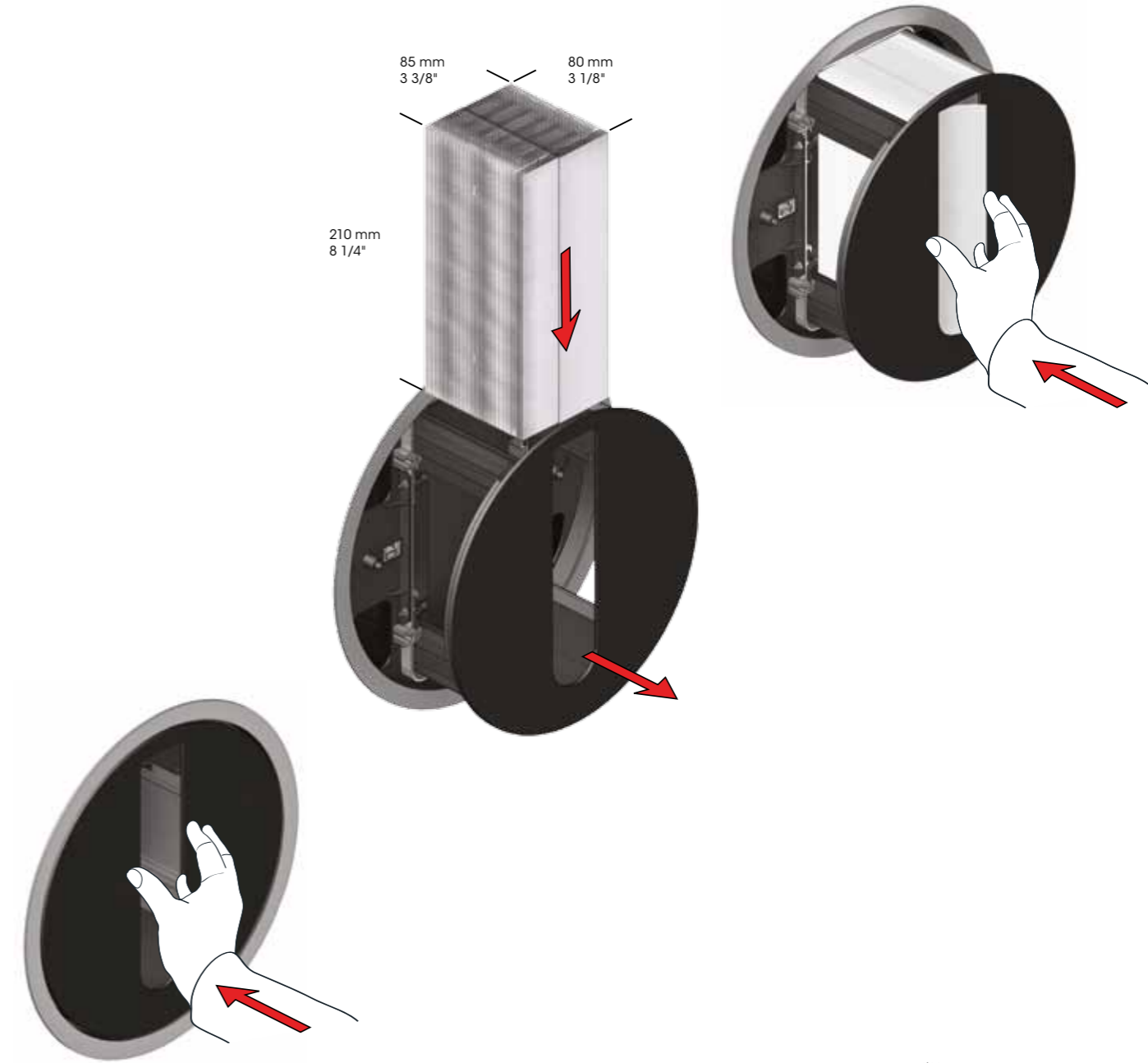


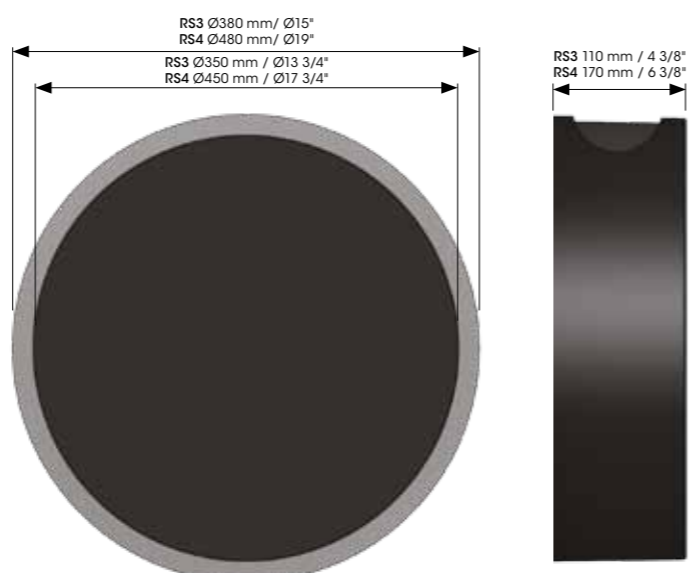
VOLA Round Series is about more than beautiful design. The technical side is just as important and the new products are classic examples of carefully prepared technical solutions. The products of VOLA Round Series are easy to install, easy to empty and easy to refill. Every detail is considered.

VOLA RS1 Built-in waste bin



VOLA RS2 Built-in paper tissue dispenser





VOLA RS1 Built-in waste bin
 Built-in depth: 150 mm
 Diameter including ring: 380 mm
 Capacity: 2.5 Liter/20-30 tissues

- The visual part consists of:
- Ring material – High polished chrome or brushed stainless steel
 - Frontplate colour – black or white
 - Material container PC/ABS laquered



VOLA RS2 Built-in tissue dispenser
 Built-in depth: 150 mm
 Diameter including ring: 286 mm
 Capacity: 80-100 tissues
 Type: Tork, Katrin, Lotus, Abena
 Size: 85 mm x 205 mm

- The visual part consists of:
- Ring material – High polished chrome or brushed stainless steel
 - Frontplate colour – black or white
 - Material container PC/ABS laquered



VOLA RS3 Retrofit waste bin
 Depth: 110 mm
 Diameter including ring: 380 mm
 Capacity: 8 Liter/60-90 tissues

- The visual part consists of:
- Ring material – High polished chrome or brushed stainless steel
 - Surface – black or white
 - Material container PC/ABS laquered



VOLA RS4 Retrofit waste bin
 Depth: 170 mm
 Diameter including ring: 480 mm
 Capacity: 22 Liter/150-250 tissues

- The visual part consists of:
- Ring material – High polished chrome or brushed stainless steel
 - Surface – black or white
 - Material container PC/ABS laquered

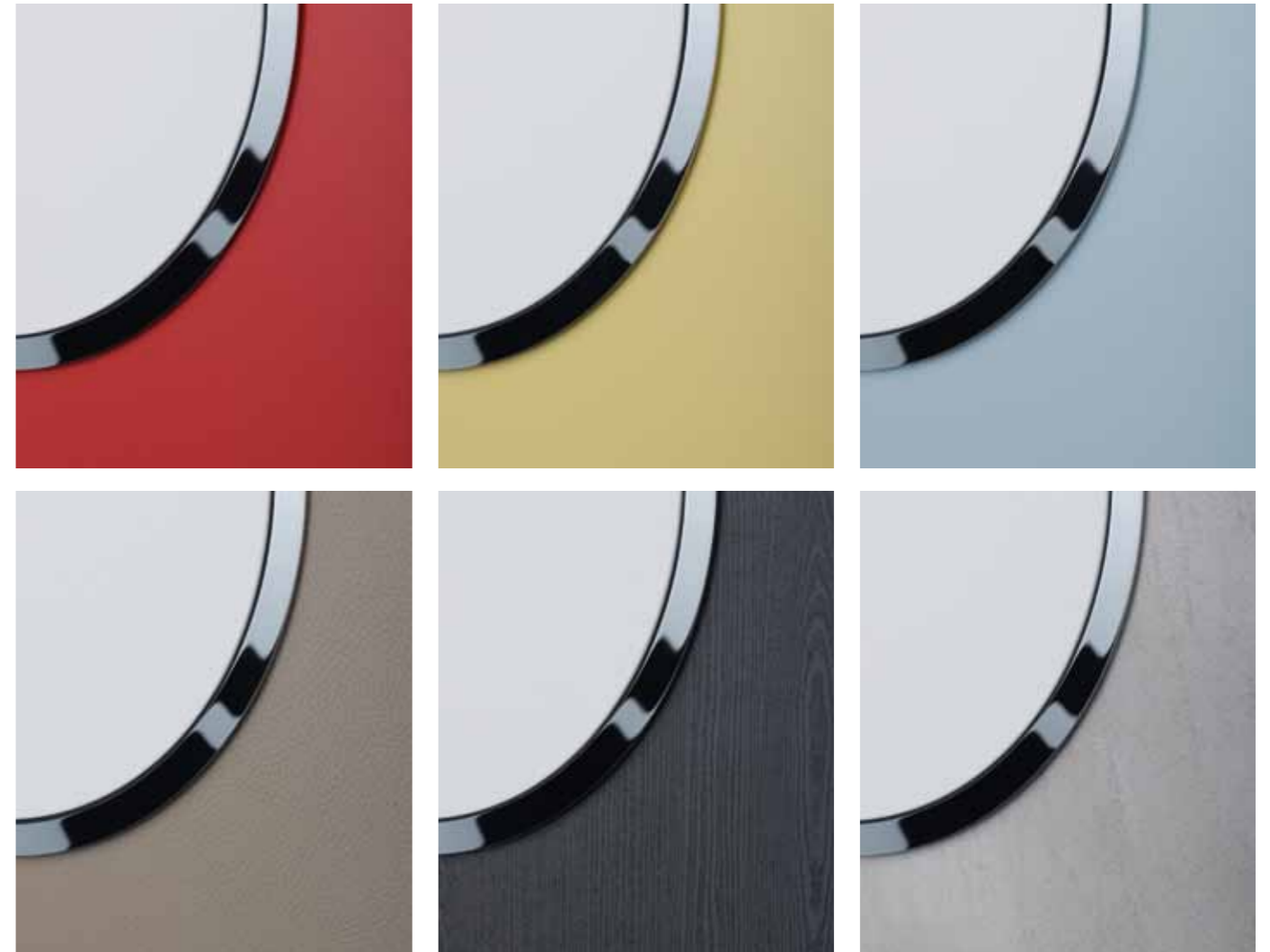
Individual design solutions

As the Round Series is a modular system the architect or interior designer can create an individual design solution adapted to the project and the needs of the building owner.

The products of the Round Series can play a discreet part in the room if the front and wall colours are the same. Depending on the wall texture and size of the room, they may also be chosen in a colour, that creates a more prominent design feature, giving the room a special character.

Material

The front of the waste bin and paper dispenser is made from a high quality PC/ABS material used in the electronic and automobile industry. It withstands humidity and is fire resistant (class UL94 VO).



VOLA, as far as the eye can see

We continually refresh our timeless design. We will never revise its classic proportions. The extended VOLA range remains true to our design principles and lasting values.

These principles and values are part of the curriculum at the VOLA Academy, where carefully selected specialist installers study every aspect of the VOLA product range and its applications. Architects and interior designers also meet at the academy to discuss common issues.



VOLA would like to thank the following locations for their co-orporation in presenting the new Round Series:

NEO Bankside, London SE1

A joint venture luxury residential development by Native Land and Grosvenor, designed by Rogers Stirk Harbour + Partners.

Blue Fin Building, London SE1

The headquarters of IPC Media designed by Allies and Morrison.

Blackall Studios, London SE2

A gallery and event space for the international art community.

